



# GAT MONTHLY MEMBERSHIP PROGRESS REPORT

Results as of: 2/28/2022

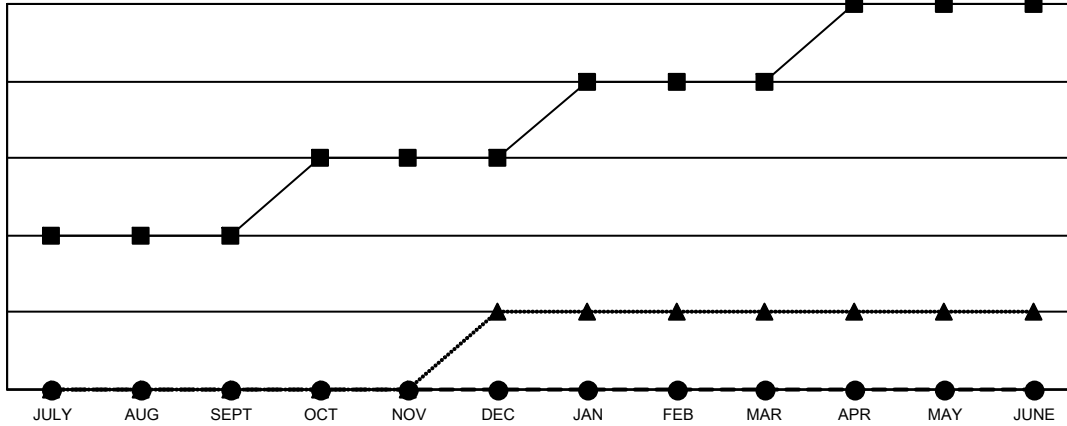
Multiple District 29

LOCATION: WEST VIRGINIA

Clubs			
RESULTS FOR 2021-2022			
QUARTER	NEW CLUB GOAL	NEW CLUBS	DROPPED CLUBS
JULY/AUG/SEPT	2	0	1
OCT/NOV/DEC	1	0	2
JAN/FEB/MAR	1	0	3
APR/MAY/JUNE	1	0	0

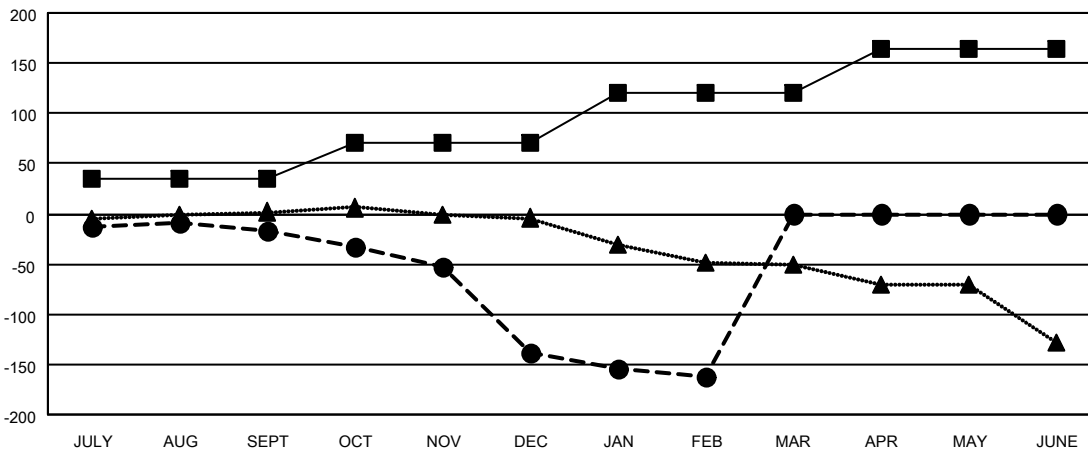
Members			
RESULTS FOR 2021-2022			
QUARTER	MEMBER GROWTH NET GOAL	MEMBER GROWTH ACTUAL	DROPPED MEMBERS ACTUAL (including transfers)
JULY/AUG/SEPT	35	59	72
OCT/NOV/DEC	35	52	171
JAN/FEB/MAR	50	38	61
APR/MAY/JUNE	45	0	0

GOALS AND ACTUAL NEW CLUBS CUMULATIVE



- CURRENT YEAR GOALS FOR NEW CLUBS
- CURRENT YEAR ACTUAL NEW CLUBS
- ▲- LAST YEAR ACTUAL NEW CLUBS

GOALS AND ACTUAL MEMBERS CUMULATIVE



- MEMBER GROWTH NET GOAL
- MEMBER GROWTH ACTUAL
- ▲- LAST YEAR MEMBERSHIP ACTUAL

<b>DROPPED CLUBS: 6</b>	55 CLUBS OF 165 ADDED 1 OR MORE NEW MEMBERS	<u>GENDER DISTRIBUTION</u>	
<u>DROPPED MEMBERS</u>		MALE	2,274 (63.80%)
DECEASED	62	FEMALE	1,290 (36.20%)
CLUB CANCELLED	28	NON BINARY	0 (0.00%)
OTHER	214	PREFER NOT TO ANSWER	0 (0.00%)
<b>TOTAL</b>	<b>304</b>	TOTAL FAMILY UNIT MEMBERS 1,056	
		FAMILY MEMBERS PAYING HALF DUES 541	

[CLICK HERE FOR CUMULATIVE MEMBERSHIP DATA](#)